

# 20W FLEXIBLE SOLAR CHARGER

Lightweight, waterproof energy source to power your gear with maximum efficiency. Take the FLEXSOLAR® 20W Flexible Solar Charger with you on your outdoor travels. With high conversion efficiency up to 24%, it's ideally suited for outdoor life and unexpected power outages. The solar panel is lightweight at only 21.2 ounces and features a comfortable foldable dimension for easy portability.



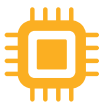
### HIGHLY EFFICIENT

Premium solar cells with an energy conversion efficiency of up to 24%.



### SLIM DESIGN

Compact size and light weight make this charger easy to carry. It fits into any backpack for outdoor activities. It should be a must to have for an emergency kit.



### SMART CHARGING

Quick Charge Technology allows smart and constant charging becomes reality even when moving in or out of the shadow.



### SUPERIOR DURABILITY

Eco-friendly and self-cleaning material E film provides lasting durability to protect against unpredictable weather conditions, and can easily withstand high temperatures.



### CHARGE MULTIPLE DEVICES

Built-in controller box has DC, USB(QC 3.0) ports to directly connect and charge smartphones, iPads and power banks.



Recharge Electronics



3D Actual Model



Controller Box



# 20W FLEXIBLE SOLAR CHARGER

## GENERAL

Model	E20
Part Number	FLC-E3-200200-2
UPC Code	785249519338

## ELECTRICAL SPECIFICATIONS

Rated Peak Power (Pmax W)	20 W
Open Circuit Voltage (Voc V)	23.7 V
Short Circuit Current (Isc A)	1.1 A
Maximum Power Voltage (Vmp V)	19.8 V
Maximum Power Current (Imp A)	1.0 A
Module Efficiency (%)	24%
Power Tolerance	±10%
Operating Temperature (°F/°C)	-4°F to 149°F (-20°C to 65°C)
Application Level	Class A
Temperature Coefficient (Pmax)	-0.45%/K
Temperature Coefficient (Voc)	-0.32%/K
Temperature Coefficient (Isc)	+0.02%/K
Standard Test Conditions	1000W/m2, 25°C, AM1.5

## MECHANICAL SPECIFICATIONS

Solar Cell Type	Monocrystalline
Dimensions (LxWxD)	23.5x 11.0x 0.1 inch (596x 279 x 3 mm) - unfolded 7.8x 11.0x 1.4 inch (198x 279x 35 mm) - folded
Net Weight	21.2 ounces (600g)
Backsheet Color	Black
Hook	4
Controller Box	IP67 rated in accordance with UL 3730 Output ports: USB (QC 3.0), DC5521
Charging Time	USB (QC3.0) port: 0.8-1.3 hrs (charge iphone 12 pro); 1.1-1.8 hrs (charge Galaxy S21) DC5521 port (with connector): 1.1-1.6hrs (charge iphone 12 pro and Galaxy S21)

## PACKAGING & SHIPPING INFORMATION

Retail Box Dimensions (LxWxD) & Weight	Quantity 1 unit per retail box: 12.6x 9.3x 1.6 in (320x 235x 40 mm); 31.4 ounces (890g)
Master Box Dimensions (LxWxD) & Weight	Quantity 22 retail box per master box: 25.6x 20.1x 10.0 in (650x 510x 255 mm); 46.1 lbs (20.9kg)

## ACCESSORIES



2 Carabiners

## WARRANTY

2-year limited warranty, register at [flexsolarenergy.com](https://flexsolarenergy.com)

## REGULATORY & CERTIFICATION

FCC, CE, RoHS

